

No-Drip® Air Operated Fluid Dispense Valve



- ▶ Fluid flow control valve(on/off) for use with low to medium viscosity materials
- ▶ Ideal for use with abrasive or filled materials
- ▶ Double air operated - air to open, air to close
- ▶ Carbide hardened internal components
- ▶ Readily fixtured or mounted
- ▶ Elastoplastic seal available in many types
- ▶ Carbon steel & aluminum wetted components
- ▶ 1/4" N.P.T.F. Material inlet and outlet

2100-911 is a automatic air operated **No-Drip™** valve for dispensing low to medium volumes of single component adhesives or sealants. Because of the seal design, it is ideally suited to handling abrasive or filled materials. The valve's unique **No-Drip** action insures a quick, positive stop of material flow when the valve is closed.

The divorced design, air to open/air to close valve features a carbide hardened needle and seat, and 1/4" N.P.T.F. inlet and outlet. The outlet accepts a broad range of dispense nozzles for extrusion. A nozzle is not included with the valve.

The valve includes a 25/64" diameter hole for fixturing. A fixture rod may be secured in position using the 1/4-20 threaded hole intersecting with the fixture hole.

Models are available with stainless steel wetted components, flow adjustments, proximity switches, and air or electrical switch pistol grip style handles.

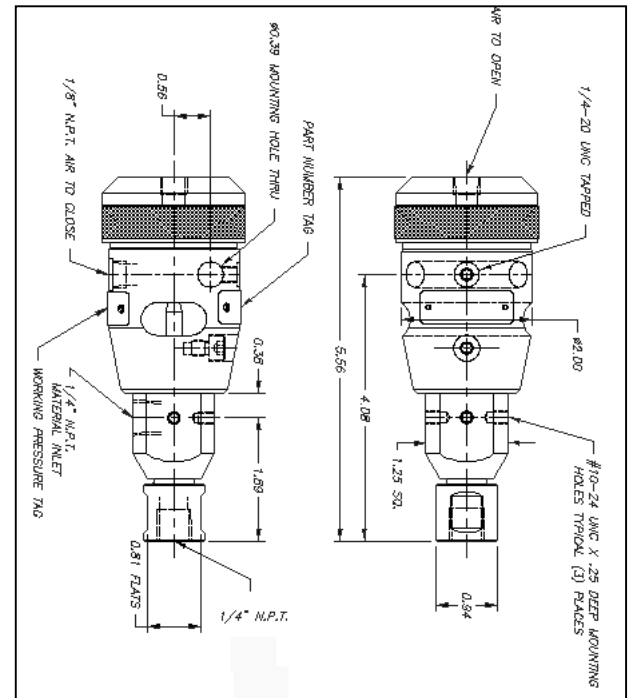
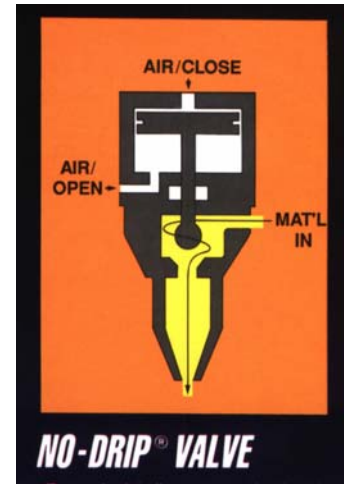
A 4-way valve (not included) is required to operate the valve.

2100-911 No-Drip dispense valve



Specifications

Weight(dry)	1.5 pounds; 24 ounces
Length	5.56" (without nozzle)
Diameter	2.20"
Max. inlet pressure	3,000 P.S.I.
Material inlet	1/4" N.P.T.F.
Material outlet	1/4" N.P.T.F.
Air ports	(2) 1/8" N.P.T.F. (air to open/close)
Air pressure required	60 P.S.I. (4.0 bar) minimum
Drill thru	.39"
Mounting hole	#10-24 w/ set screw
Seal	Available in different materials
Nozzle	Not included
Operation	4 way valve required; not included
Service kit	2150-395 (Not included with valve)



Models

2100-911-003-AA	Standard valve with elastoplastic seals
2200-911-004	Standard valve with stainless steel wetted components and hardened needle
2200-027	2200-911 valve with handle assembly
2200-044	2100-911 valve with spring cap and flow control



Manufacturers of Precision Dispense Systems & Valves

45677 Helm Street • P.O. Box 701460
Plymouth, MI 48170 • USA
Phone: (734) 459-8600
Fax: (734) 459-8686
Web: SealantEquipment.com
Email: Sales@SealantEquipment.com